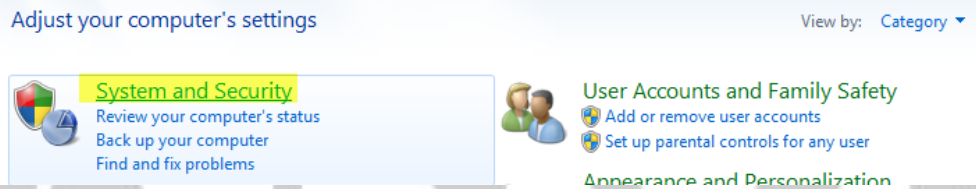
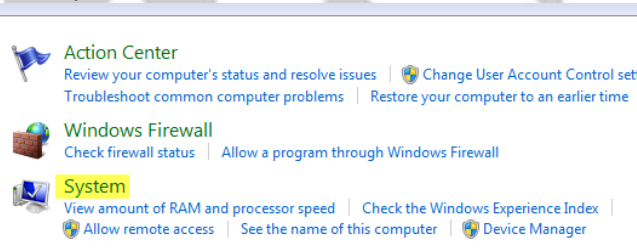


How to Permanently Turn on Your USB Ports

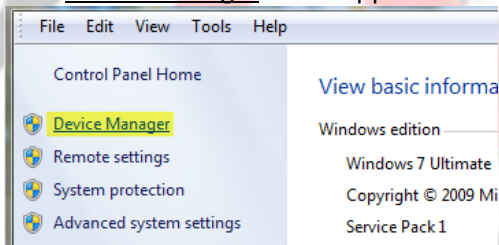
1. Begin by opening your Windows Control Panel. If you are using the default **View by: Category** setting click System and Security. If your Control Panel is set to View by: Large icons or small icons, click the System icon



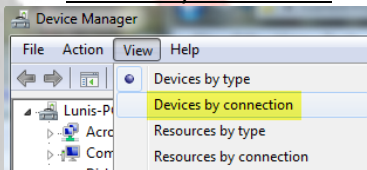
2. Click System



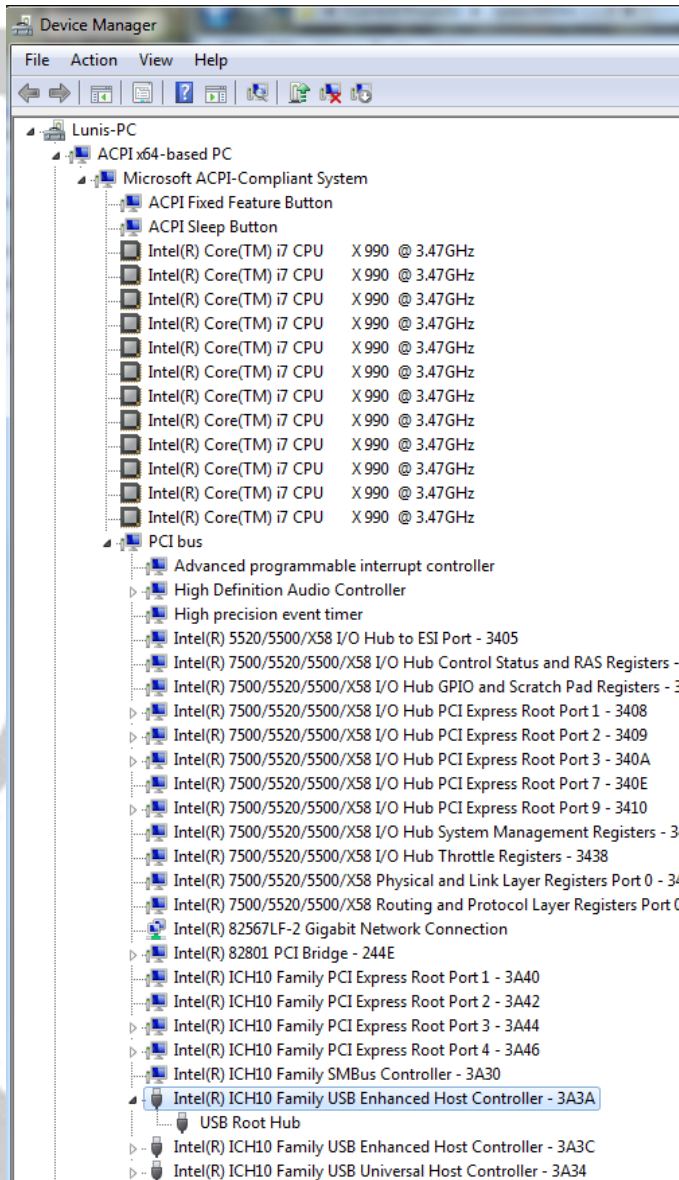
3. Click Device Manager in the upper left-hand corner of the Window



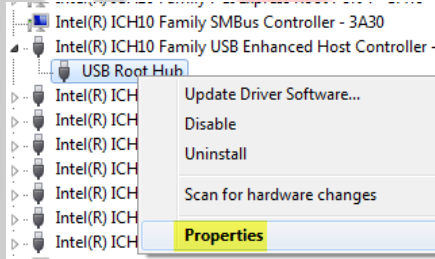
4. Click Devices by connection under the View menu



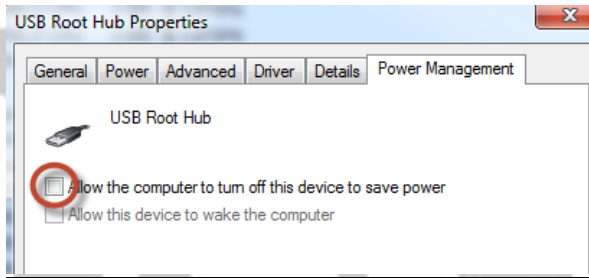
5. Expand 1st line ACPI x64-based PC/PCI bus/Intel(R) ICH10 family PCI Express Root Port 1



6. Right click on the 1st USB Root Hub and select Properties



7. Click Power Management and remove the checkmark from Allow the computer to turn off the device to save power



Repeat #6 for each USB device

© KnowBrainer 1996 - 2013



BRAINER