



### Setting up your SpeechWare TravelMike

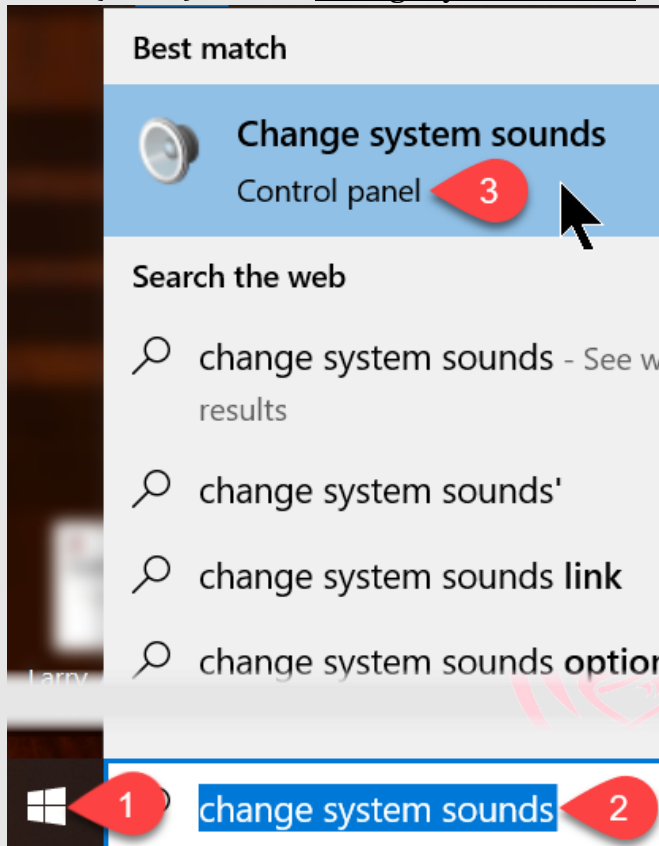
1. Remove items numbers 1 – 3 from the packaging. Items 4 and 5 are not required for TableMike use in a notebook computer but item 5 (the USB multi-USB port) can come in handy for use on desktop computers.



2. Insert #1 (the microphone) plug into the right microphone input jack on #2 (SpeechMatic multipurpose USB soundcard). Note that the pink knee microphone input jack includes a microphone symbol to prevent possible confusion.
3. Insert #2 into #3 (90° USB joint) and insert #3 into a USB port on your notebook/tablet computer. Adjust the bendable microphone boom by aiming it towards your mouth. Note that this microphone has an approximate 15 inch range. Also note that the foam windscreens are unnecessary when dictating more than 5 inches from the microphone.
4. #5 is a mini USB adapter for mini USB ports on many new computers
5. When inserting into a USB port, waking up your computer from hibernation OR booting up your computer the power button will turn **green** to signify that it is receiving power with all built-in features (auto gain control/auto EQ etc.). A push of the button will **mute** the MultiAdapter soundcard. Holding down the power button for approximately 3 seconds will trigger the **blue** light mode which turns the unit on but bypasses all internal features. The **blue** light mode is designed for overly sensitive microphones and VoIP use.

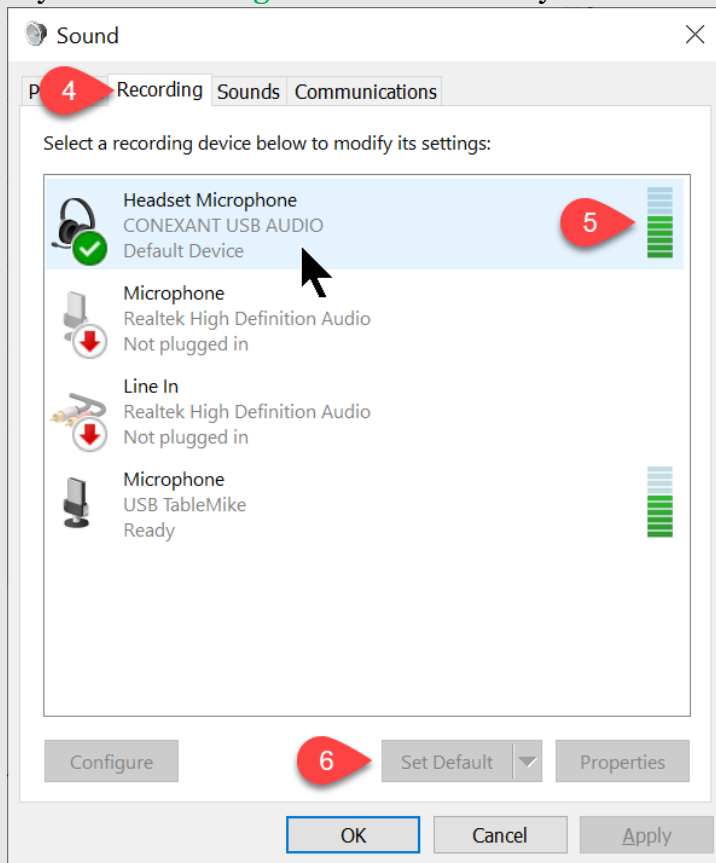
## How To Set Up Your USB Microphone or Sound Soundcard

1. Press or click the Windows Key (on your keyboard)
2. Type **change system sounds** into Windows Search field
3. Press {Enter} or click Change system sounds



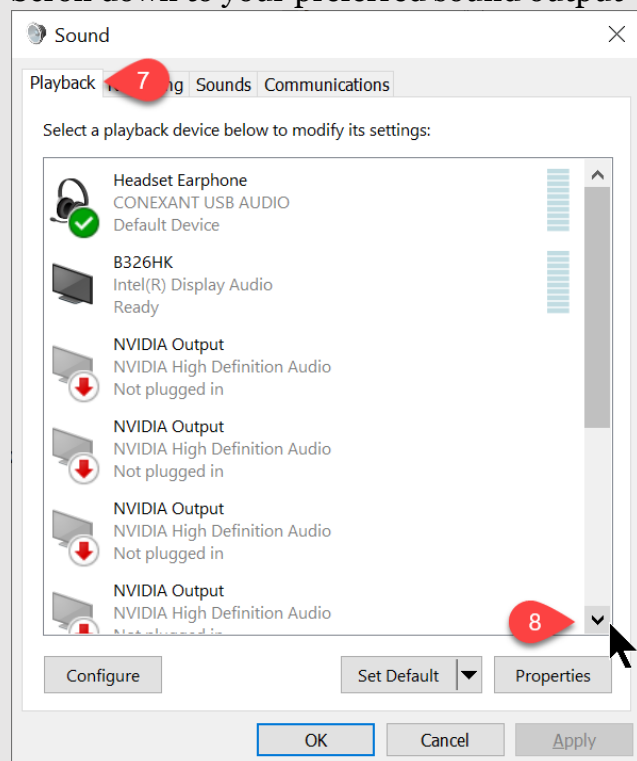
*Note that the Windows Sound utility will take several seconds to open*

4. Click the Recording tab.
5. As you speak into your microphone you should see **green bar** movement
6. If you don't see a **green checkmark** in your new sound system, click Set Default

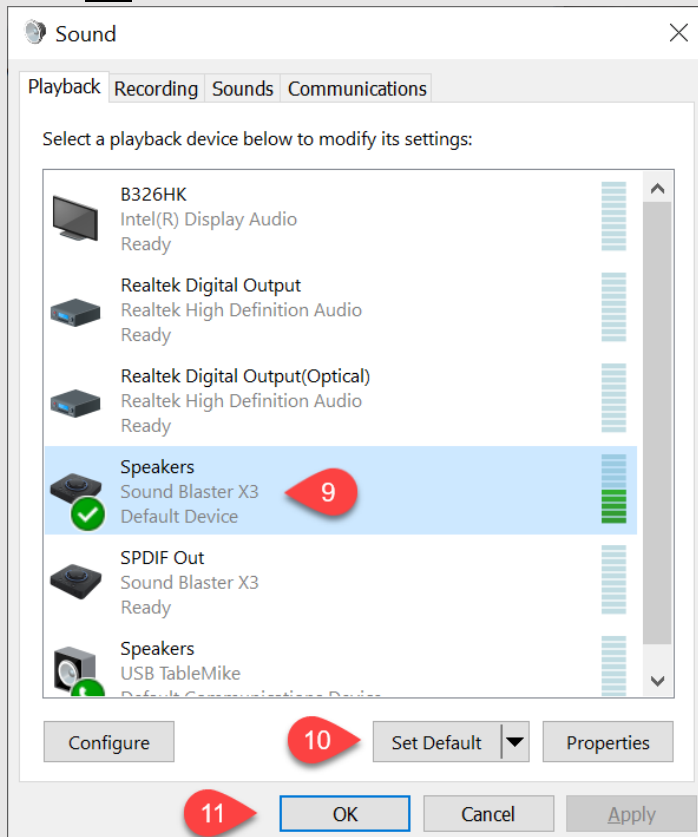


*Note that full duplex sound systems will automatically steal your sound system the 1<sup>st</sup> time they are plugged in. If you would prefer to use your previous sound output (typically your computers integrated soundcard) see following:*

7. Click the Playback tab
8. Scroll down to your preferred sound output



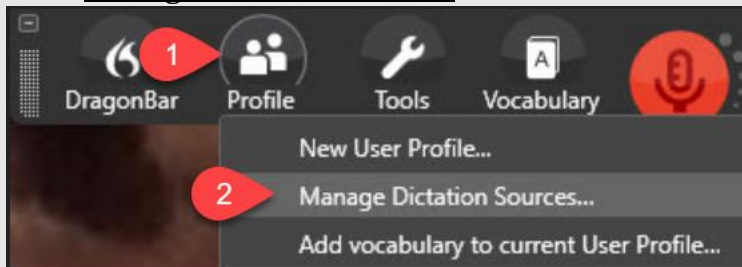
9. Mouse click on the appropriate sound source. The Realtek Audio (with a little speaker icon), is the most popular integrated sound system
10. Click Set Default
11. Click OK



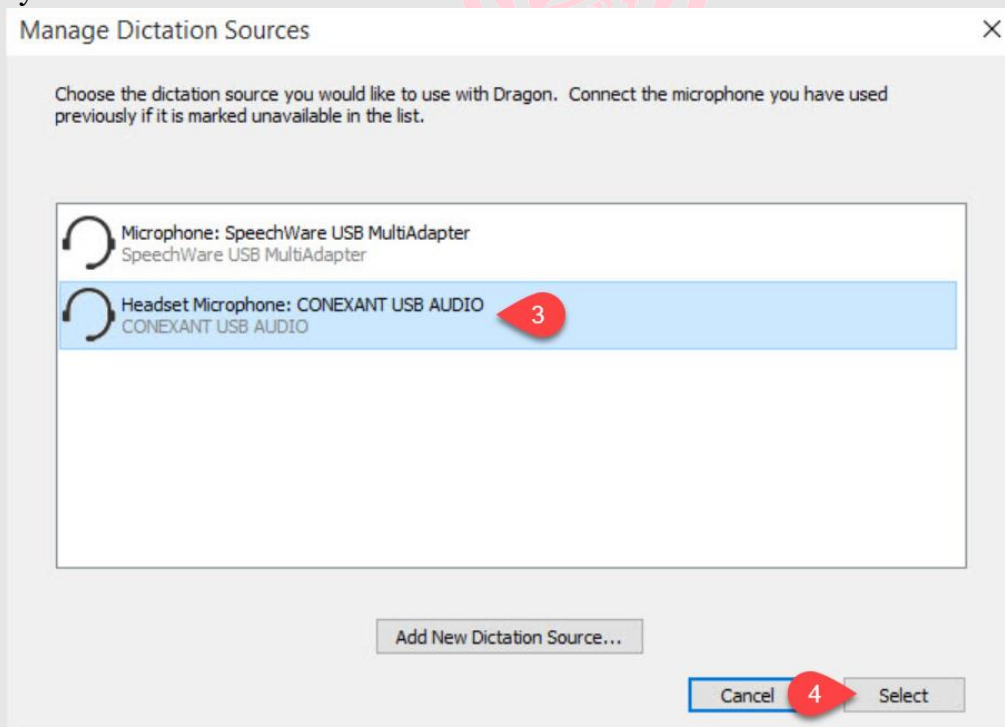
## How To Change Your DPI 15 (ONLY) Sound Input Device (USB Soundcard or USB Microphone)

*Note: If you are using DMPE 4 or a Group 15 version of Dragon skip to the next page*

1. Open the DragonBar and click Profile
2. Click Manage Dictation Sources



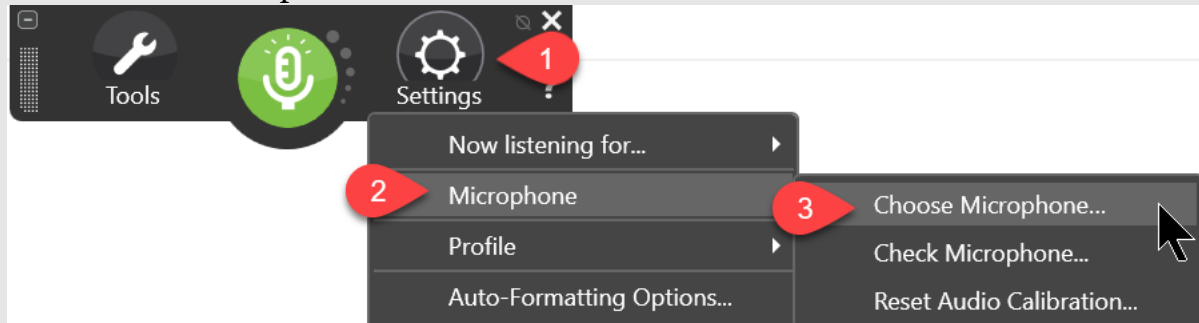
3. If you see your sound system on the list, click to select. If you don't see your sound system on the list, which is unusual, click the Add New Dictation Source button
4. Click Select. Dragon will need about 20 seconds to automatically set up your new sound system.



## How To Change Your DMPE 4 or DPG 15 (ONLY) Sound Input Device (USB Soundcard or USB Microphone)

*Note: If you are using DPI 15 go back to the previous page*

1. Click DragonBar Settings
2. Click Microphone
3. Click Choose Microphone



4. Mouse click on the appropriate microphone. If you're not certain, speak a few words and the microphone. You should see green bars jumping up and down on 1 of the appropriate choices.
5. Click Finish. Dragon will typically need about 20 seconds to automatically set up your new sound system



© KnowBrainer 1996 - 2020