



MuliAdapter Guide

Setting up your SpeechWare MultiAdapter:

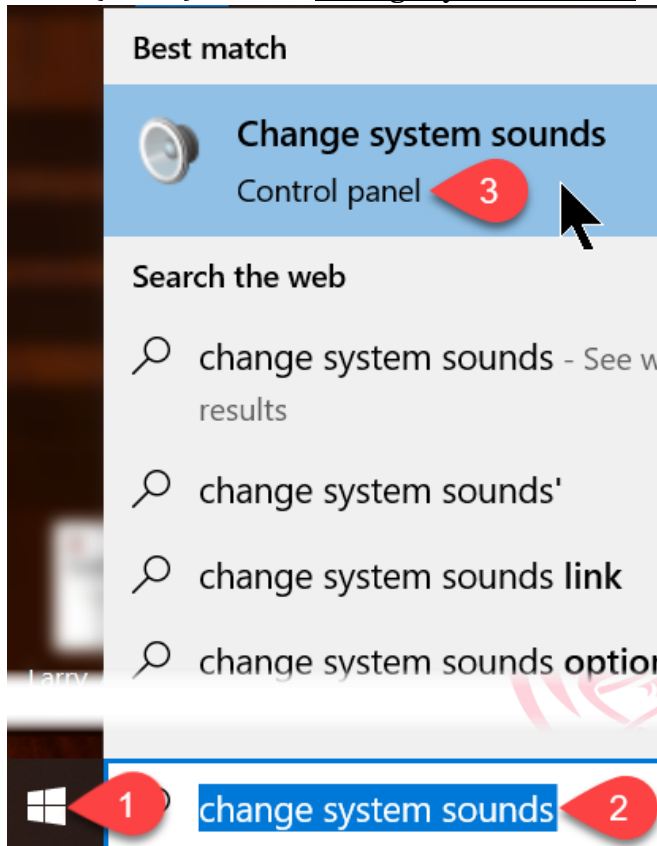
1. Remove items numbers 1 – 3 from the packaging. Item #3 (the extension cable) is included to prevent the MultiAdapter (USB soundcard) from blocking an adjacent USB port but is not required.



2. Insert your analog microphone into the pink microphone input jack on #1. Note that the microphone input jack includes a microphone symbol to prevent possible confusion.
3. Insert #1 into #3 (extension cable) if you don't want to block an adjacent USB computer port. You can optionally leave the extension cable out if you don't need it. Plug your MultiAdapter USB soundcard into a dedicated USB port. Note that if you're using a desktop computer we do not recommend using a front or side port because they are split from the rear ports. We additionally don't recommend using a USB splitter. If possible, use a dedicated rear desktop computer USB port. Note that this isn't an issue with notebook, all-in-one and tablet computers which only utilize direct USB ports.
4. When inserting into a USB port, waking up your computer from hibernation or booting up your computer the power button will turn **green** to signify that it is receiving power in **green** light mode, with all built-in features (auto gain control/auto EQ etc.). A push of the button will **mute** the MultiAdapter soundcard. Holding down the power button for approximately 3 seconds will trigger the **blue** light mode which turns the unit on but bypasses all internal features. The **blue** light mode is designed for overly sensitive microphones and VoIP use.

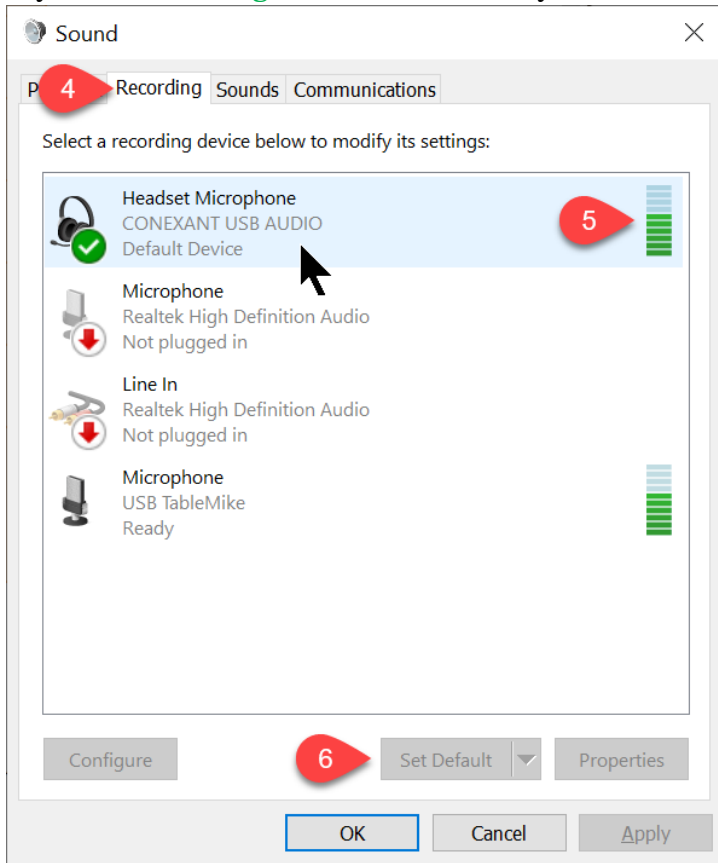
How To Set Up Your USB Microphone or Sound Soundcard

1. Press or click the Windows Key (on your keyboard)
2. Type **change system sounds** into Windows Search field
3. Press {Enter} or click Change system sounds



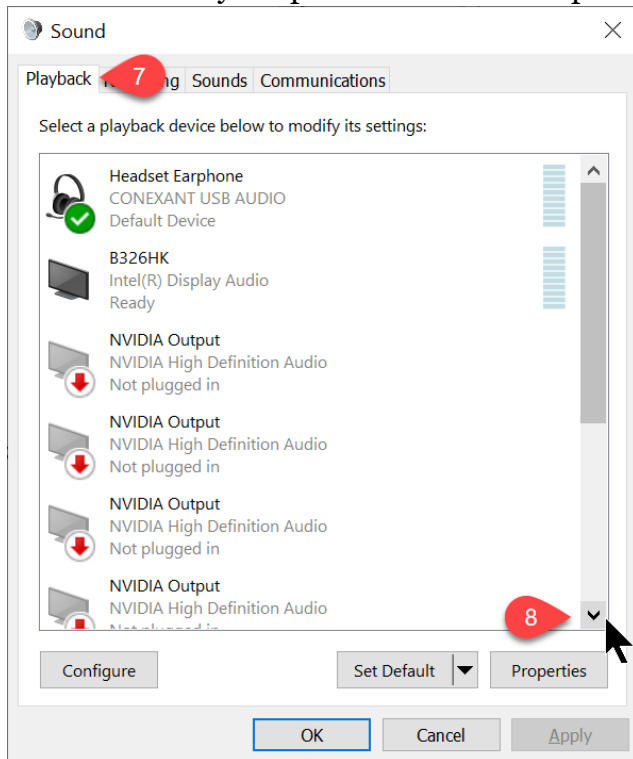
Note that the Windows Sound utility will take several seconds to open

4. Click the Recording tab.
5. As you speak into your microphone you should see **green bar** movement
6. If you don't see a **green checkmark** in your new sound system, click Set Default

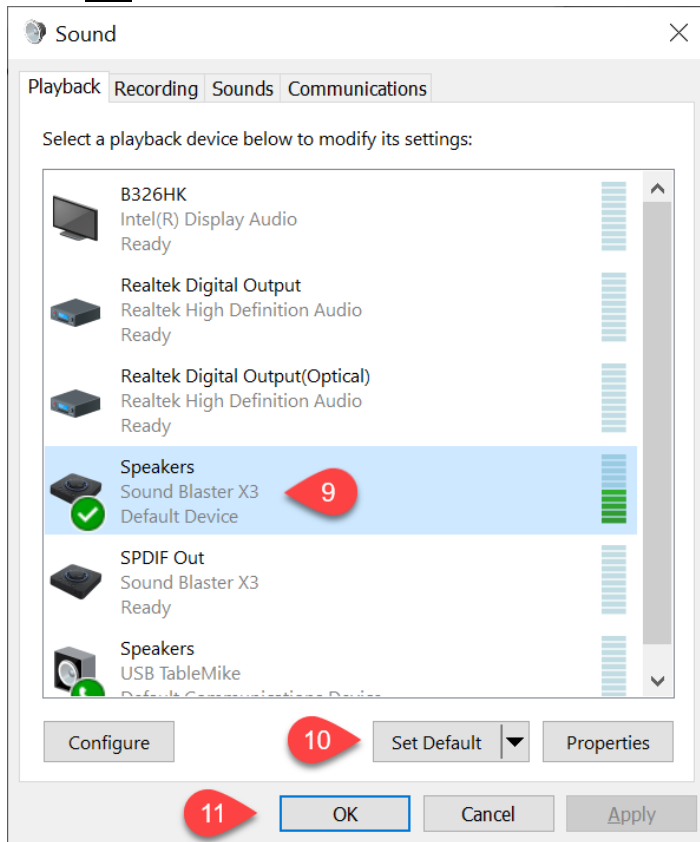


Note that full duplex sound systems will automatically steal your sound system the 1st time they are plugged in. If you would prefer to use your previous sound output (typically your computers integrated soundcard) see following:

7. Click the Playback tab
8. Scroll down to your preferred sound output



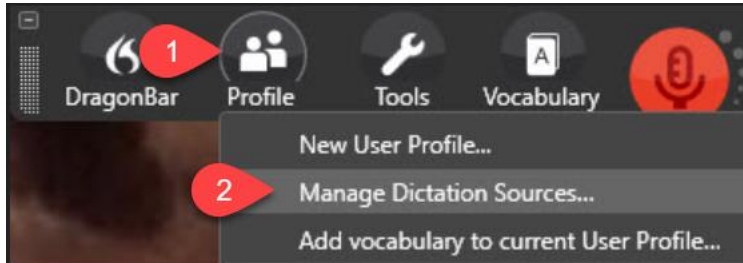
9. Mouse click on the appropriate sound source. The Realtek Audio (with a little speaker icon), is the most popular integrated sound system
10. Click Set Default
11. Click OK



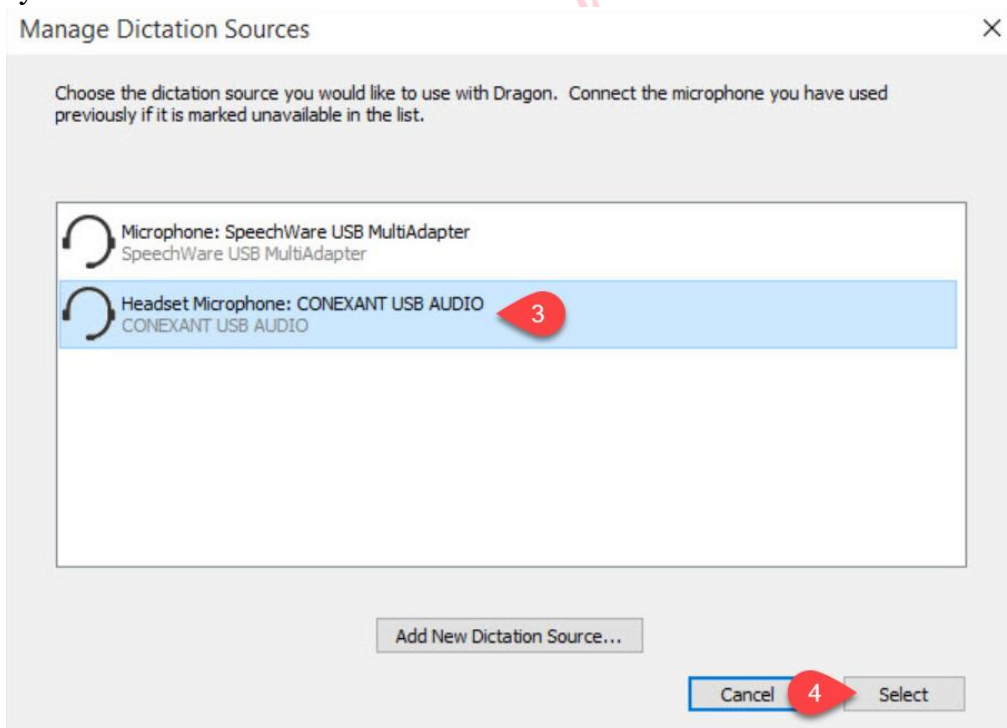
How To Change Your DPI 15 (ONLY) Sound Input Device (USB Soundcard or USB Microphone)

Note: If you are using DMPE 4 or a Group 15 version of Dragon skip to the next page

1. Open the DragonBar and click Profile
2. Click Manage Dictation Sources



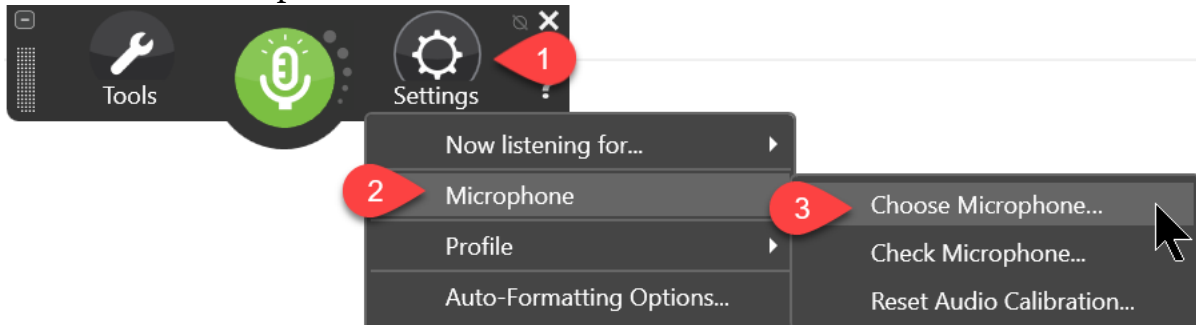
3. If you see your sound system on the list, click to select. If you don't see your sound system on the list, which is unusual, click the Add New Dictation Source button
4. Click Select. Dragon will need about 20 seconds to automatically set up your new sound system.



How To Change Your DMPE 4 or DPG 15 (ONLY) Sound Input Device (USB Soundcard or USB Microphone)

Note: If you are using DPI 15 go back to the previous page

1. Click DragonBar Settings
2. Click Microphone
3. Click Choose Microphone



4. Mouse click on the appropriate microphone. If you're not certain, speak a few words and the microphone. You should see green bars jumping up and down on 1 of the appropriate choices.
5. Click Finish. Dragon will typically need about 20 seconds to automatically set up your new sound system

